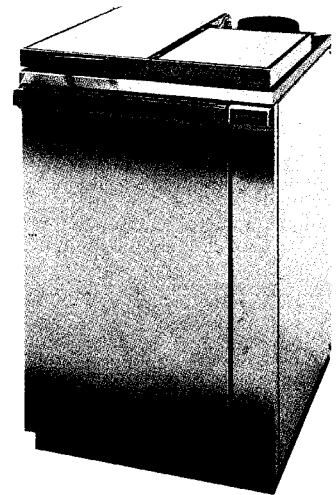


BOSKY

**THE
ULTIMATE
CHOICE**



BOSKY INSTALLATION- EVEN MORE FLEXIBLE

The range of BOSKY products means that you get what you need. Each model in the range has a depth front to back of only 60cm., and has a choice of two positions, top or rear, for the flue outlet. You can fit a BOSKY into almost any kitchen. There are two sizes of central heating cooker and two sizes of central heating boiler. The boilers work in the same highly efficient way but provide central heating only and do not have an oven. They do, however, have a very useful hot-plate top which will give an additional cooking facility. The BOSKY will burn dry wood, peat, coal and smokeless fuels.

60 C.H. COOKER 65 C.H. BOILER 90 C.H. COOKER 95 C.H. BOILER

Max Btu/hr on dry wood	Btu/hr k cal/hr	60 approx 11 rads.	65 approx 12 rads.	90 approx 14 rads.	95 approx 15 rads.
Dimension	Height mm	840	840	840	840
	Width mm	1,000	560	1,040	610
	Depth mm	600	600	600	600
Firebox Size	Width mm	250	250	300	300
	Depth mm	440	440	440	440
Adjustable Height	Top mm	220	220	220	220
	Middle mm	360	360	360	360
	Low mm	500	500	500	500
Oven Size	Hot Height mm	320		320	
	Width mm	360		360	
	Depth mm	530		530	
Warm	Height mm	270		270	
	Width mm	360		360	
	Depth mm	530		530	
Oven Electric Heating		2 kW		2 kW	
Max Log Length	mm	430	430	430	430
Surface Area of Heat Exchanger	Sq.cm	8,400	8,600	10,000	10,200
Dia Flue Outlet	ins	6"	6"	6"	6"
Top with Flue Box or Back	ins	6" Metalbestos or similar	6" Metalbestos or similar	6" Metalbestos or similar	6" Metalbestos or similar
Weight	kg	260	175	275	190

Dimensions and specifications are approximate and we reserve the right to change them at any time.

**THE FRIENDLIEST OF FUELS-TRADITIONAL
FARMHOUSE COOKING-COMplete SPACE-AGE
CONTROLLABILITY. THAT'S...BOSKY!**

BOSKY



THERMOROSS

thermorossi spa
36011 arsiero (vicenza) italy - via grumolo, 4 (z.i.)
telefono (0445) 741310 (3 linee ric. aut.)
teleg. thermorossi arsiero
telex 431162 THEROS I